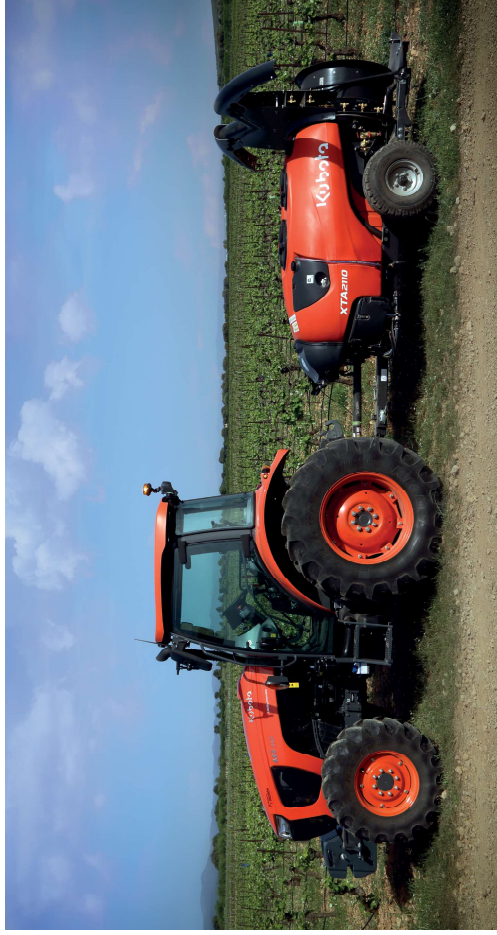


#Technical data



Measures and weights

(Depending on the basic configuration of the equipment)

Model	XTA2110	XTA2115	XTA2120
Measurement			
Width (cm)	136	145	158
Length (cm)	410	443	452
Height (cm)	140	148	160
Weight (kg)	663	759	811



Technical Novelty Award

Premio Novedad Técnica Sobresaliente

Outstanding Technical Novelty Award



by SOLARIMPULSE FOUNDATION



Pulverizadores Fede S.L.U.

Pol. Industrial Castilla, vial 3, parcela 61C - 61F, 46380 Chestes, Valencia

www.kubota-eu.com

This publication may not be reproduced in whole or in part in any form without the prior written consent of KUBOTA. It corresponds to the status at the time of going to press. The manufacturer reserves the right to change technical specifications without notice, and the manufacturer does not assume any responsibility for errors or omissions. The information on warranty and safety as well as further product information can be obtained from the responsible KUBOTA authorized dealer.

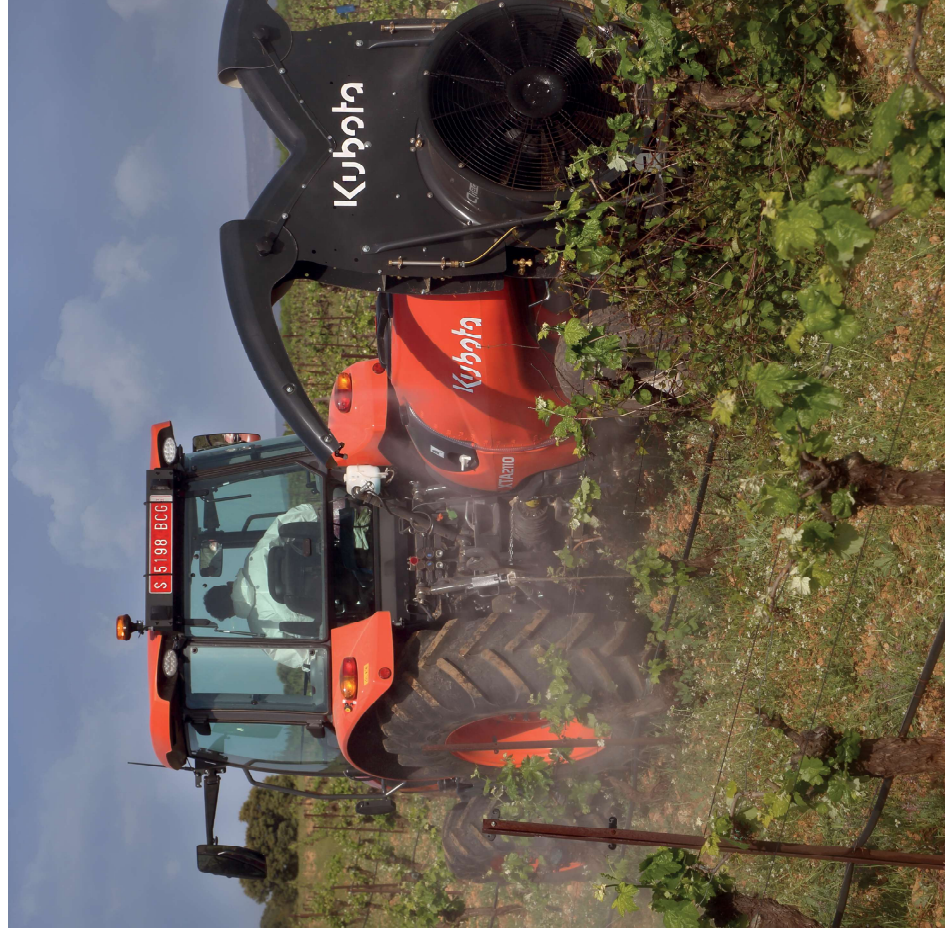
v. 1/2023

For Earth, For Life
Kubota

XTA

KUBOTA
XTA21

FRUIT TREES AND VINEYARDS



XTA21:

Good work on small farms

Versatile sprayer for optimal treatments in small fruit farms and vineyards. This equipment is intended for professionals who require robust and durable equipment to effectively protect their crops from pests and diseases.



Vine spoiler (optional)

Multi-purpose sprayer configurable with vineyard-specific spoiler or multi-purpose spoiler for fruit trees and vineyards.



Propeller FD Air 8.0

Helical design for high performance, high air output and minimal consumption. Made of glass-fibre reinforced Nylon 66, resulting in lower weight, greater flexibility and vibration resistance.

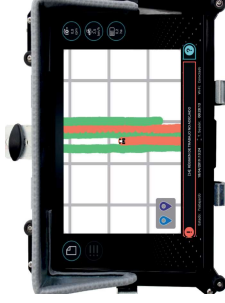


H30 technology (optional)



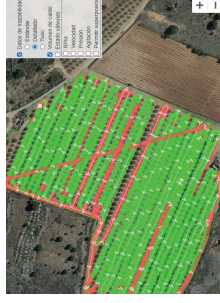
Optional equipment to provide intelligence and connectivity to the sprayer: GPS, quick set-up and dispatch of work orders to the team, accuracy, real-time control and alerts, detailed display of spray data and tracking.

- Intelligent calibration system.
- Proactive alert system.



GPS-corrected application display system

- GPS positioning.
- Real-time display of the treatment performed.



Connection to the Speciality Crops platform



Simplify your work and have valuable information that will help you make better decisions on your farm:

- Creating and sending work orders.
- Checking the work of all atomisers in your field.
- Detailed display of treatments carried out on the map.
- Real traceability information.

Basic features

Capacity (liters)	1000, 1500, 2000
Air Group	Dynamic Oi 8.0
Propeller	FD Air 8.0
Axis	1100mm (1000) - 1200mm (1500) - 1.300mm (2000)

Air volume	43.000 m ³ /h
Pump	FDH 105
No. of nozzles / type	14 Tee-jet Dic Core
Wheels	10.0/80/12 (1000) 10.0/75/15.3(1500+2000)